



Cyrusbioscience

Flag-Tag Antibody (Rabbit)

Catalog Number: TAB0005

Amount: 100µg/100µl

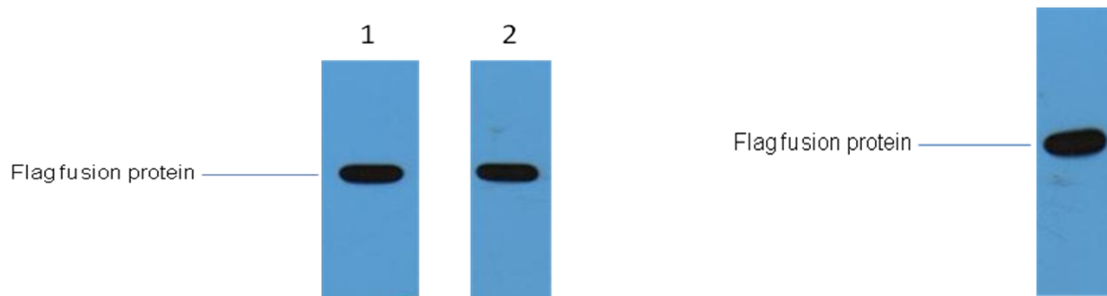
Background: The DYKDDDDK peptide (Flag-tag) is a small component of an epitope which does not appear to interfere with the bioactivity or the biodistribution of the recombinant protein. It has been used extensively as a general epitope tag in expression vectors. It can be used for affinity chromatography, then used to separate recombinant, overexpressed protein from wild-type protein expressed by the host organism. It can also be used in the isolation of protein complexes with multiple subunits. A Flag-tag can be used in many different assays that require recognition by an antibody. If there is no antibody against the studied protein, adding a Flag-tag to this protein allows one to follow the protein with an antibody against the Flag sequence.

Form of Antibody: Rabbit IgG in phosphate buffered saline (without Mg²⁺ and Ca²⁺), pH 7.4, 150mM NaCl, 0.02% sodium azide and 50% glycerol.

Storage/Stability: Store at -20°C/1 year

Specificity/Sensitivity: The Flag tag antibody can recognize C-terminal, internal, and N-terminal Flag-tag fusion proteins.

Applications: WB: 1:5,000



1µg Flag fusion protein+ Primary antibody dilution at 1:5,000 (lane 1) and 1:10,000 (lane 2).

Transfected 293 cell lysate with Flag-tag fusion protein+ Primary antibody dilution at 1:10,000.